



Grand Yarra Facade

ECHUCA, 3564

Lot 1406 Glanmire Grand 31

DESIGN OVERVIEW

Our Glanmire Grand 31 design combines smart functionality with effortless liveability. Every space is thoughtfully planned to be practical, comfortable and easy to furnish, giving you a home that feels welcoming from day one. The open-plan layout creates generous areas for family living and entertaining, ensuring everyone has room to relax and connect. This home also features a premium façade with eaves included as standard, adding architectural style, street appeal and long-term protection at no extra cost. What truly sets us apart are our Essential Inclusions Packages, delivering exceptional value far beyond standard new-home offerings. With our fast and proven building processes, you'll enjoy a smoother journey from contract to construction—getting the keys in your hands sooner and with complete confidence.

PACKAGE PRICE

\$823,900

Package Inclusions

- ✓ Smart start essentials package
- ✓ LIFETIME Structural Guarantee
- ✓ Colorbond Roof
- ✓ Natural Finish Driveway Curb to Garage
- ✓ Site costs including slope/fall, excavation and soil removal
- ✓ 50LM concrete piling
- ✓ H1 Concrete slab
- ✓ 7 Star Compliance Energy Efficiency
- ✓ FREE 6KW Solar Power Package
- ✓ WIFI Touchbutton Video Intercom
- ✓ LED Downlights to whole home, including Porch and Alfresco
- ✓ Vinyl and Carpet Flooring Package
- ✓ 900mm kitchen appliances
- ✓ 2340mm internal doors
- ✓ 7 star energy compliance
- ✓ Polytec soft close doors, drawers and panels
- ✓ Gainsborough polished chrome door furniture
- ✓ Panelled slimline garage door and remote opener
- ✓ Built in robes to all bedrooms
- ✓ Mirror Sliding Doors to all robes
- ✓ Semi frameless shower screens
- ✓ Shampoo wall / shower niche to all showers
- ✓ Soft close Wall hung vanities with 20mm stone tops and above counter basins
- ✓ Insect Screens to all openable windows and sliding doors
- ✓ 13KW ducted refrigerated air conditioning
- ✓ 2550mm ceiling height

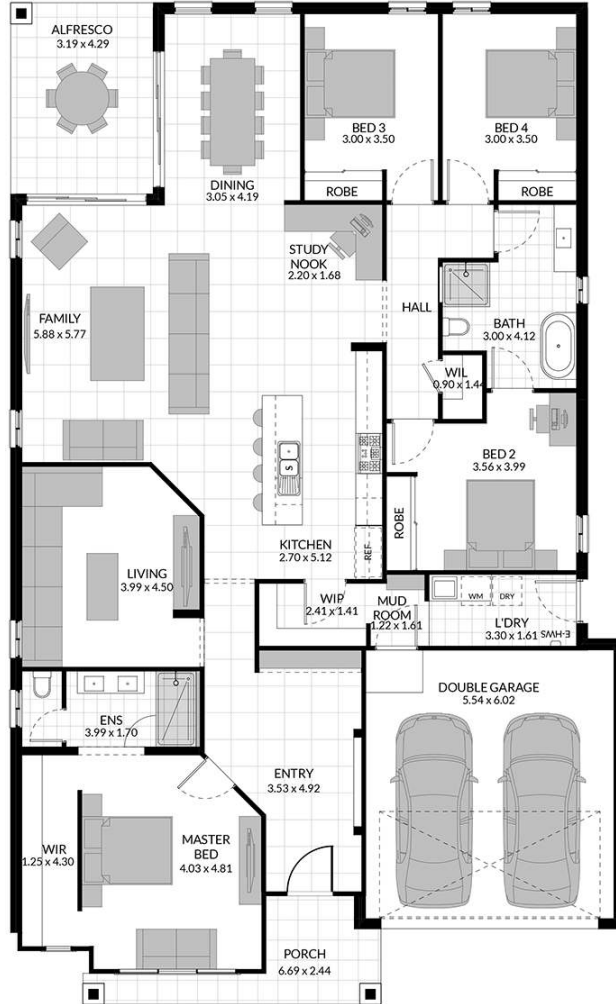
CONTACT US TO FIND OUT MORE

Christian Barillaro
christian@sundancerhomes.com.au
0483281598

All designs and plans are copyright, not to be copied or reproduced in part or in full or used in any way or any form without the prior written permission & consent of Sundancer Homes. Plans, photos and illustrations are to be used as a guide only. Photos may show furniture and fittings, feature screens, landscape, landscape structures, driveways and decorative finishes that are not part of the building or building prices. Sundancer Homes reserves the right to change and alter plans at any time on this website or its brochures without notice and does so from time to time with improvements and compliance requirement changes. Façade images are to be used as a guide only, some estate and subdivision guidelines and requirements from land developers and councils may alter the compliance or homes and home widths and depths that are allowed to be approved within their land developments. Please see one of our sales consultants at our display homes for more information specific to your land.

House Design Glanmire Grand 31 Facade Grand Yarra Width 13.76m Depth 22.37m TOTAL 227.04m²

PACKAGE PRICE
\$823,900



Note: Floorplan based on Accent Facade. Floor plans may vary slightly with different facades. Block widths required can differ by area and are indicative only, while being subject to council guidelines and developer requirements. Please consult your Sundancer Homes Building and Design consultant for specific details in your area. The total area (m²) includes the patio and outdoor retreat. Non-fixed furniture shown on floor plans, such as desks in Study and Study Nooks, are indicative only and not included. The sizes of windows and external doors shown may vary from the new 7-star BASIX requirements. This document is for illustration purposes and should be used as a guide only. Illustrations are not to scale. Refer to actual working drawings. Sundancer Homes reserves the right to change the price without notice. Feb 2026

DISPLAY HOME LOCATIONS

Albury Sales & Selection Centre

482 Kiewa Street,
Albury, NSW 2640

02 5024 5204

Open Monday to Friday 9am – 5pm

Leneva Displays

ARCADIA 25

4 Davidson Road
Leneva, VIC 3691

Yarrowong Displays

GLANMIRE GRAND 31

31 Glanmire Blvd,
Yarrowong, VIC 3730

GLANMIRE 26

6 Davidson Road
Leneva, VIC 3691

HAYMAN 29

33 Glanmire Blvd,
Yarrowong, VIC 3730

WATERBROOK 36

44 Jennings Blvd,
Leneva, VIC 3691

CONTACT US TO FIND OUT MORE

Christian Barillaro
christian@sundancerhomes.com.au
0483281598

